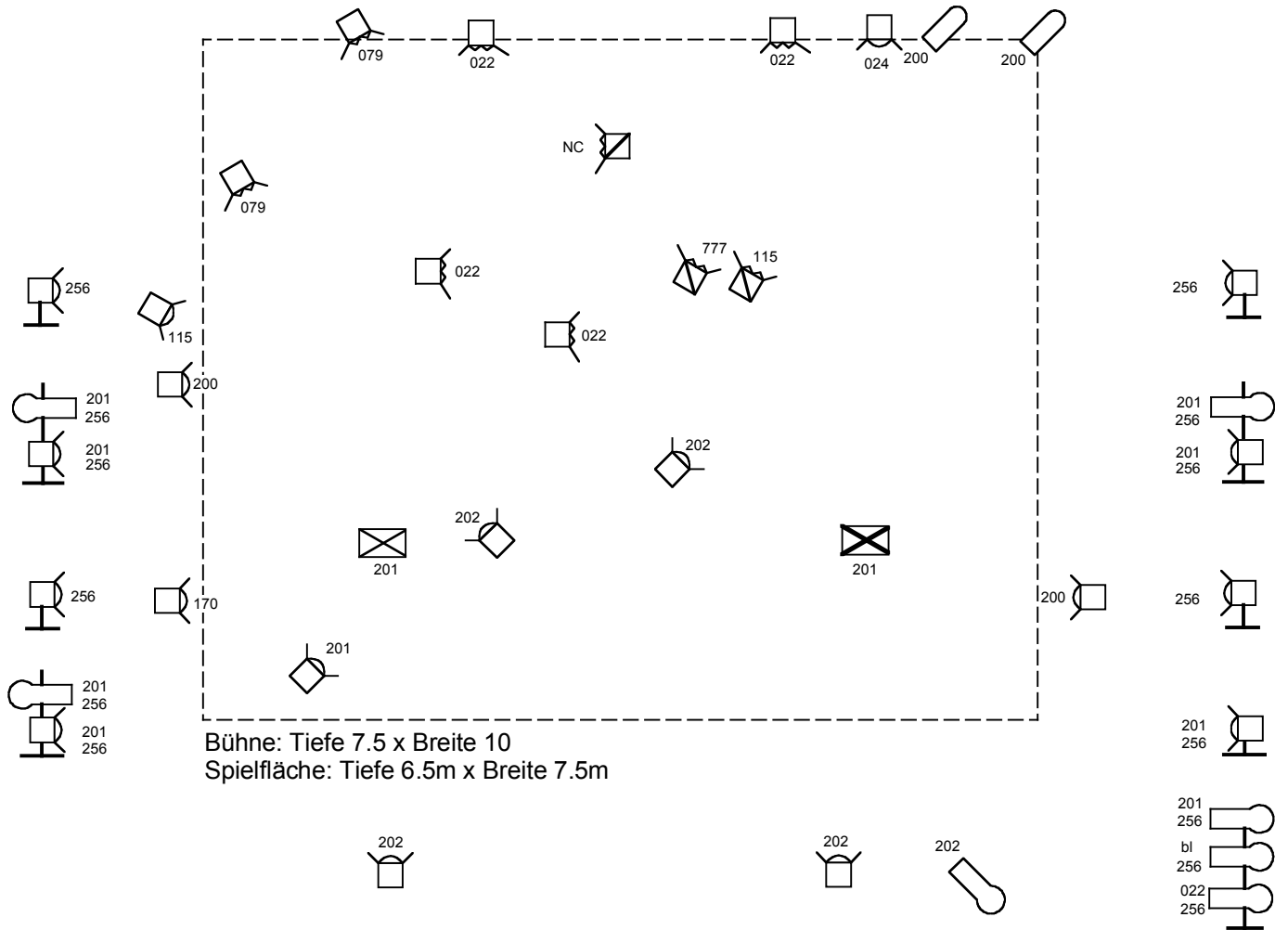


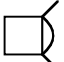


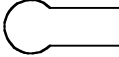




SOMAFON: VOLLFETT UND FLIEGENGEWICHT

Lichtplan Vollversion Gastspiel, Stand 30.08.09

! Allgemeiner Lichtplan, nicht massstäblich !



Materialliste:

-  18 x PC 1KW
-  6 x Fresnel 1KW
-  3 x Fresnel 650W
-  7 x ETC S4 25-50 Profiler
-  2 x Par 64, CP62
-  2 x Flut asym. oder sym.
-  5 x Bodenbrett, oder Bodenstativ tief
-  4 x Gassenleitern,
Alternative, 5 x Bodenbretter und 4 x Stative

Kontakt:
smartlight lichtdesign
Stefan Marti
smartlight@gmx.ch
0041(0)78 770 38 33